

School Prospectus

2016 Edition



Yamagata Prefectural Touhoggakkan Junior and Senior High School

1-7-1, Chuoh Minami, Higashine City, Yamagata Prefecture
Zip Code: 990-3730

Phone: 0237(53)1540 (Secretary Office)

0237(53)1541 (Staff Room for Junior High School)

0237(53)1542 (Staff Room for Senior High School)

Fax: 0237(53)1240 (Secretary Office)

0237(53)1552 (Staff Room for Junior and Senior High School)

School Emblem



Derivation of School Emblem

The image of the school emblem is associated with the school name, Touoh, or “eastern cherry blossoms”. The flowers represent the blossoming of students into contributing members of our local and global community after learning in an interdisciplinary junior and senior high school.

School Song of Touhgakkan Junior and Senior High School

The ground moistens
And beads of water
Gather and flow into a pool
That reflects the clouds

Light, hope and love wish someday
To become graceful flowers

Distant greenery, the breath of the gods
This life-giving hometown
Running through the dawn stillness
Hope to become the wind
Upon which the future soars

Our friends, radiant
The road we walked bearing tears
We spread our wings and take flight
With the promise of eternity in our hearts

As translated by Joseph Comer

Content

1. Our History
 - (1) Outline
 - (2) Principals
2. School Regulation
3. Objectives of Our School Curriculum
4. Annual Objectives
5. School Curriculum
 - (1) School Curriculum for Students Who Entered Yamagata Prefectural Touhgakkan Junior High School in 2016.
 - (2) School Curriculum for Students Who Entered Yamagata Prefectural Touhgakkan Senior High School before 2016.
 - (3) School Curriculum for Students Who Entered Yamagata Prefectural Touhgakkan Senior High School in 2016.
6. Annual School Calendar for 2016.
7. Daily Time Schedule and Constituents of Each Homeroom Class
8. Staff
 - (1) Number of Staff
 - (2) Number of Constituents of Each Department
 - (3) Staff List
9. Organization of Flow Chart for Teachers
10. Students
 - (1) Students' Almae Matres
 - (2) Means of Transportation Used by Students
 - (3) Careers in 2016.
11. Student Council
 - (1) Organization of Flow Chart for Students
 - (2) Number of Constituents of Each Club and Sport Team in 2016

1 . Our History

(1) Outline

- 13.March.1904 Women voluntarily gathered and privately established Tateoka Women's Community School in the town of Tateoka.
1. April. 1909. School name changed to Kitagun Girls' School
1. April. 1920. The school was placed under the authority of Kitamura Yamagata County Office and changed its name to Yamagata Prefectural Kitamura Yamagata County Girls' Realschule.
1. April. 1921. School was placed under the authority of Yamagata Prefecture and changed its name to Yamagata Prefectural Tateoka Girls' Realschule.
1. April. 1925. School name changed to Yamagata Prefectural Tateoka Girls' High School.
1. April. 1948. By reformation of the school system, Yamagata Prefectural Tateoka 2nd High School was founded.
1. April. 1950. Established as a co-ed school. School changed its name to Yamagata Prefectural Tateoka Senior High School.
1. April. 2004. Switchover to an advanced academic module system was adopted and completed.
25. Dec. 2009. Under the plan to install a new Yamagata prefectural interdisciplinary junior and senior high school (in Nairiku Area), Yamagata prefectural office publicly announced that an interdisciplinary junior and senior high school based on Yamagata Prefectural Tateoka Senior High School would be established in Higashine City.
- May. 2010. – March. 2012.
The Higashine Interdisciplinary Junior and Senior High School Curriculum Master Plan Formulation Committee was Installed.
- April. 2012. – March. 2014.
The Higashine Interdisciplinary Junior and Senior High School Inauguration Establishment Committee was

Installed.

April. 2014. – March. 2016.

The Higashine Interdisciplinary Junior and Senior High School Inauguration Preparation Committee was Installed.

2. October. 2014.

Yamagata Prefectural Office announced the names of the new Higashine Interdisciplinary Junior and Senior High School as Touhgakkan Junior High School and Touhgakkan Senior High School.

1. April. 2015. Touhgakkan Junior High School and Touhgakkan Senior High School Inauguration Preparation Office was installed inside Tateoka Senior High School.

16. June. 2015. School emblem of Touougakkan Junior High School and Touougakkan Senior High School was announced.

27. Nov. 2015. School song of Touhgakkan Junior High School and Touougakkan Senior High School was announced.

1. April. 2016. School changed its name from Yamagata Prefectural Tateoka Senior High School to Yamagata Prefectural Touhgakkan Senior High School.

The new school was built in Chuou Minami, Higashine City and moved there.

Yamagata Prefectural Touhgakkan Junior High School was installed as a joint establishment.

8. April. 2016. The Inauguration Ceremony and the 1st Entrance Ceremony were held.

(2) Principals

1st Hiroshi Kan From 1st April. 2016

2 - School Regulations

1. School Regulations of Yamagata Prefectural Touhgakkan Junior High School

Chapter 1 - General Provisions

(School Name)

Article 1 - The name of the school is Yamagata Prefectural Touhgakkan Junior High School.

(Objectives)

Article 2 - The objective of our school is to supply an interdisciplinary junior high school curriculum together with Yamagata Prefectural Touhgakkan Senior High School (hereafter cited as Touhgakkan Senior High School) in compliance with Article - 71 of the School Education Act and regulations legislated by the Board of Education of Yamagata Prefecture.

(Student Quotas)

Article 3 - The enrollment limit shall be governed by the Board of Education of Yamagata Prefecture.

(School Zone)

Article 4 - Our school zone shall be governed by the Board of Education of Yamagata Prefecture.

(Course Extension)

Article 5 - The course extends over three years.

(Staff Organization)

Article 6 - Our Staff Organization shall be governed by the Board of Education of Yamagata Prefecture.

Chapter 2 - School Year, Trimester and Holidays

(School Year and Trimester)

Article 7 - The school year begins on the 1st of April and finishes on the 31st of March.

2. The school year is divided into three terms as follows,

- (1) The first trimester: 1st of April to 31st of July
- (2) The second trimester: 1st of August to 31st of December
- (3) The third trimester: 1st of January to 31st of March
(holidays)

Article 8 - In addition to Saturdays, Sundays, and national holidays designated by Japanese law, the following school holidays will be observed:

- (1) Start of Term Holiday
- (2) Summer Vacation
- (3) Winter Vacation
- (4) End of Term Holiday

When it is deemed necessary for proper academic development, or when other unavoidable circumstances occur, the Principal exercises the power to establish rest days in addition to the above listed, or to mandate more classes to occur during the above-stipulated rest periods.

Chapter 3 - Academic Curriculum

(Formulation of Academic Curriculum)

Article 9

- (1) The formulation of the academic curriculum will be established in detail separately.
- (2) In order to facilitate consistency between the junior and senior high school curricula, conferences are to be conducted with previously established interdisciplinary junior senior high schools.

Chapter 4 - Graduation

(Graduation)

Article 10 - The school will bestow a diploma to students acknowledged to have completed the entire Touohgakkan academic curriculum.

Chapter 5 - Enrollment and Transfers

(Enrollment Requirements)

Article 11 - Qualification for enrollment into the school will be determined by the Prefectural Board of Education.

(Acceptance and Selection)

Article 12

(1) Persons to be granted enrollment acceptance are to be selected from among those who have completed all enrollment procedures (such persons will henceforth be referred to as applicants.)

(2) Matters relating to the above-mentioned selection process will be treated separately.

(Application Procedures for Enrollment)

Article 13 - All applicants must submit a completed application form, their student record from the school in which they are presently enrolled (certified by the principal of said school), as well as application processing fees to the principal of Touohgakkan. The principal may grant permission to omit the submission of student records, in the case of exceptional circumstances.

(Transfer Applicants for Enrollment)

Article 14 - Applicants granted matriculation as first year students after the school year has begun, as well as applicants transferring into the school as non-first-year students from another school will be assigned a grade level deemed appropriate to their age, aptitude, and academic achievement.

(Time Frame for Matriculation)

Article 15 - Students are to be granted enrollment within thirty days of the start of the academic year. However, students may be granted

matriculation at any time during the term in the case of exceptional circumstances if it is deemed by the principal that it will not conflict with the academic needs of the students.

(Submission of written oaths)

Article 16

- (1) Persons granted enrollment acceptance must submit written oaths with the signatures of their guardians to the principal together with a certified copy of resident registration within twenty days of enrollment acceptance.
- (2) Students must resubmit written oaths with the signatures of their new guardians to the principal together with a certified copy of resident registration promptly if it is deemed that the present guardians are incapable of giving sufficient protection.

(Guardians)

Article 17—Persons who fall under(1) through (3) in the list can be classified as guardians.

- (1) Person in parental authority
- (2) Legal representative
- (3) Person whom Principal may deem fit

(Transferring)

Article 18

- (1) Students intending to transfer to another school must submit a transfer asking form with a joint signature of their guardians to the principal.
- (2) The Principal can grant enrollment acceptance to students wishing to transfer to this school if it is deemed that it will not conflict with the academic needs of the students.

(Suspension of Attendance)

Article 19 - The Principal can suspend the attendance of students who suffer from an infectious disease or have danger of infection.

Chapter 6 - Rewards and Punishments

(Commendation)

Article 20 - The Principal can award students if necessary from an

educational standpoint.

(Punishments)

Article 21

- (1) The Principal can punish students if necessary from an educational standpoint.
- (2) Disciplinary actions may include withdrawal or admonition.
- (3) Withdrawal prescribed in the preceding item is determined in Enforcement Regulations for the School Education Law.

Chapter 7 - Supplementary Rules

(Supplementary Rules)

Article 22 - The Principal can determine the necessary items regarding the enforcement of this regulation.

Supplementary Provisions

This school regulation shall be enforced starting from the 1st of April 2016.

2. School Regulations of Yamagata Prefectural Touhgakkan Senior High School

Chapter 1 - General Provisions

(School Name)

Article 1 - The name of the school is Yamagata Prefectural Touhgakkan Senior High School.

(Objectives)

Article 2 - The objective of our school is to supply an interdisciplinary

senior high school curriculum together with Yamagata Prefectural Touhgakkan Junior High School (hereafter cited as Touhgakkan Junior High School) in compliance with Article - 71 of the School Education Act and regulations legislated by the Board of Education of Yamagata Prefecture.

(Curriculum, etc.)

Article 3 - Curriculum, Course, Course Duration, Enrollment Limit

- (1) Curriculum: Full-time.
- (2) Course: Module system general course.
- (3) The course extends over three years.
- (4) The Enrollment limit shall be governed by the Board of Education of Yamagata Prefecture.

(School Zone)

Article 4 - Our school zone shall be governed by the Board of Education of Yamagata Prefecture.

(Staff Organization)

Article 5 - Our Staff Organization shall be governed by the Board of Education of Yamagata Prefecture.

Chapter 2 - School Year, Trimester and Holidays

(School Year and Trimester)

Article 6 - The school year begins on the 1st of April and finishes on the 31st of March. The school year is divided into three terms as follows,

- (1) The first trimester: 1st of April to 31st of July
- (2) The second trimester: 1st of August to 31st of December
- (3) The third trimester: 1st of January to 31st of March

(Holidays)

Article 7 - In addition to Saturdays, Sundays, and national holidays designated by Japanese law, the following school holidays will be observed:

- (5) Start of Term Holiday
- (6) Summer Vacation
- (7) Winter Vacation
- (8) End of Term Holiday

When it is deemed necessary to proper academic development, or when other unavoidable circumstances occur, the principal exercises the power to establish rest days in addition to the above listed, or to mandate that more classes occur during the above-stipulated rest periods.

Chapter 3 - Academic Curriculum

(Formulation of Academic Curriculum)

Article 8

- (1)The formulation of the academic curriculum will be treated in detail separately.
- (2)In order to facilitate consistency between the junior and senior high school curricula, conferences are to be conducted with previously established interdisciplinary junior and senior high schools.

Chapter 4 – Graduation

(Graduation)

Article 9 - Modules in the curriculum are acknowledged by the principal after taking all school records into consideration.

Article 10 - The school will bestow a diploma to students acknowledged to have completed the entire Touhgakkan academic curriculum.

Chapter 5 - Enrollment, Long-term Leave, Studying Abroad, Transferring, and Withdrawal

(Enrollment Requirements)

Article 11 - Qualification for enrollment into the school is granted to one who has graduated from a junior high school, a school which is not chartered by the Ministry of Education, Culture, Sports, Science

and Technology (MEXT) but still corresponds to a junior high school (hereafter cited as a junior high school equal) or one who falls under item 1 of Article 95 in Enforcement of the School Education Act.

(Acceptance and Selection)

Article 12-

- (1) Persons who completed the whole curriculum of Touohgakkan Junior High School are to be granted enrollment acceptance without going through the selection process as long as they have the will to enter Touohgakkan Senior High School.
- (2) Persons to be granted enrollment acceptance are to be selected from among those who have completed all enrollment procedures (such persons will henceforth be referred to as applicants.)
- (3) Matters relating to the above-mentioned selection process will be established separately.

(Application Procedures for Enrollment)

Article 13 - All applicants must submit a completed application form, their student records from the school from which they will graduate or have graduated from (certified by the principal of said school), as well as application processing fees via the principal of their alma matter to the principal of Touohgakkan. The principal may grant permission to omit the submission of student records, in the case of exceptional circumstances.

(Transfer Applicants for Enrollment)

Article 14 - Applicants granted matriculation as first year students after the school year has begun, as well as applicants transferring into the school as non-first-year students from another school will be assigned a grade level deemed appropriate to their age, aptitude, and academic achievement.

(Time Frame for Matriculation)

Article 15 - Students are to be granted enrollment within thirty days of the start of the academic year. However, students may be granted matriculation at any time during the term in the case of exceptional circumstances if it is deemed by the principal that it will not conflict with the academic needs of the students.

(Submission of written oaths)

Article 16 -

- (1) Persons granted enrollment acceptance must submit written oaths with the signatures of their guardians to the principal together with a certified copy of resident registration within twenty days of enrollment acceptance.
- (2) Students must resubmit written oaths with the signatures of their new guardians to the principal together with a certified copy of resident registration promptly if it is deemed that the present guardians are incapable of giving sufficient protection.

(Guardians)

Article 17 - Guardians who fall under (1) through (3) are placed in the order shown in the list.

- (1) Person in parental authority
- (2) Legal representative
- (3) Person whom Principal may deem fit

(Leave of Absence or withdrawal)

Article 18 -

- (1) Students must submit a Leave of Absence or a Withdrawal Asking Form with the signatures of their guardians if they cannot attend school more than two months due to sickness or any other inevitable reason for the need to withdraw. This must include the explanation of the reason and must be permitted by the Principal. If the reason is sick leave, a medical certificate must be attached to the documentation.
- (2) The period of a leave of absence must less than or equal to two years.

(Studying Abroad)

Article 19 - Students requiring permission under item 1 of Article 93 in Enforcement of the School Education Act must submit a Study Abroad Asking Form with the signatures of their guardians to the Principal.

(Transferring to a Different School or Transferring to a Different Course)

Article 20 -

- (1) Students intending to transfer to a different school or a different course must submit a transfer asking form with a joint signature of their guardians to the principal.
- (2) The Principal can grant enrollment acceptance to students wishing to transfer to this school if it is deemed that it will not conflict with the academic needs of the students.

(Suspension of Attendance)

Article 21 - The Principal can suspend the attendance of students who suffer from an infectious disease or have danger of infection.

Chapter 6 – Tuition Fees, Entrance Fees and Entrance Examination Fees

(Tuition Fees, Entrance Fees and Entrance Examination Fees)

Article 22 - The cost of tuition, the way to collect tuition fees, entrance fees, entrance examination fees and others are decided based on the Yamagata Prefectural School Regulation and the Enforcement Regulation which both discuss tuition fees and other kinds of fees as well as the way to collect these fees.

Chapter 7 - Rewards and Punishments

(Commendation)

Article 23 - The Principal can award students if necessary from an educational standpoint.

(Punishments)

Article 24 -

- (1) The Principal can punish students if necessary from an educational standpoint.
- (2) Disciplinary actions may include withdrawal or admonition.
- (3) Withdrawal prescribed in the preceding item is determined in Enforcement Regulations for the School Education Law.

Chapter 8 - Supplementary Rules

(Supplementary Rules)

Article 25 - The Principal can determine the necessary items regarding the enforcement of this regulation.

Supplementary Provisions

This school regulation shall be enforced starting from the 1st of April 2016.

3 - School Motto

Objective of our school

1. To nurture students' aspirations so that they can contribute to the development of our local society as well as our global society.
2. To nurture students' creative intellect based upon logical reasoning as well as abundance of sensitivity and curiosity.
3. To nurture students to be healthy in both mind and body as well as to be full of compassion which is rich in love for their hometown and a consciousness for the needs of the community.

Ideal Image of Our Students

1. Students with lofty aspirations.
2. Students with creative intellect.
3. Students with enriched humanity.

4 – Objectives of This School Year

1. In order to nurture students with lofty aspiration, the school will...
 - (1) Nurture students' spirits to enhance themselves by having them attempt to deepen their learning and increase their sophistication as well as foster their own intellectual curiosity.
 - (2) Guide students toward the improvement of their desire to learn and also promote the development and utilization of collaborative learning especially through the Knowledge Constructive Jigsaw Method.
 - (3) Promote education that nurtures students' lofty aspirations by planning seminars and lectures for students.
 - (4) Nurture students to have a positive attitude towards the contribution to our society by getting to know more about our society through career education.

- (5) Nurture students' attitude towards thinking about how they should live their lives by inspiring their intellectual curiosity through the Project for *Challenge SSH*.
 - (6) Nurture students' attitude to know more about themselves and respect others through opportunities to contribute to others.
 - (7) Plan to elevate student' awareness on health and safety issues as well as enhance their ability for self-control.
2. Students with creative intellect
- (1) Develop students' autonomic and collaborative learning skills through classes.
 - (2) Assist the maturation of students' creative intellect by utilizing the Learning Media Centre of our school.
 - (3) Help students to acquire fundamental knowledge and scholarly ability that is derived from logical reasoning and the ability to collaborate with peers in order to create.
 - (4) Help students to acquire how to properly express what they have learned in a researching process collaborating with others.
 - (5) Implement plans for more opportunities to individually assist students, such as interviews, tutoring, and etc., by promoting smaller class sizes.
3. Students with enriched humanity
- (1) Plan to perfect educational activities and promote students' health by attempting to coordinate with students' families and the local community.
 - (2) Contribute to make the school involved with the local residents by making an effort towards improving public relations of Touohgakkan Junior and Senior High School by frequently transmitting information.
 - (3) Nurture rich sensitivity and humanity through reading and research study.
 - (4) Nurture students to have a sublime sense of ethics and character.
 - (5) Nurture a sense of self-discipline while still having the consciousness to collaborate with others.
 - (6) Nurture healthy students both mentally and physically through club activities.
 - (7) Try to quickly notice and support students with various troubles by counseling them alone and also with their parents.
 - (8) Encourage to have quality communication skills through intercourse

with local people.

5–Curriculum

1. Curriculum of Yamagata Prefectural Touhokkan Junior High School for the Students who Entered Our School in the 2016 School Year.

	The Number of Modules Taken in Each School Year				Notes
	1 st . year	2 nd . year	3 rd . year	Total Modules	
Japanese	4	4	4	16	There are two time tables, which are Week A and Week B because some modules have decimal points such as 0.5 throughout the school years.
Social Study	3	3	4	10	
Mathematics	4	4	4.5	12.5	
Science	3	4	4	11	
Music	1.5	1	1	3.5	
Art and Design	1.5	1	1	3.5	
Physical Education	2.5	2.5	2.5	7.5	
Technical Arts and Home Economy	2	2	2	6	
Foreign Languages	5	4.5	5	14.5	
Moral Education	1	1	1	3	
Comprehensive Learning Period	1.5	2	2	5.5	
Special Activities	1	1	1	3	
Total	30	30	30	90	
One Module Time	55 minutes				

Curriculum of Yamagata Prefectural Touhokkan Senior High School for Students who Entered This School in the 2015 School Year and before

Full Time

General Course

Principal Hiroshi Kan

School Registration Number: 16

Subject Area	Subjects	Standard Modules	Culture Course				Notes	Science Course				Notes		
			The Number of Modules Taken in Each School Year					The Number of Modules Taken in Each School Year						
			1st.	2nd.	3rd.	Total		1st.	2nd.	3rd.	Total			
Japanese Language	Integrated Japanese Language	4	⊙	4		4	the first year Mathematics II : Students can register this after completing Mathematics I.	4			4	the first year Mathematics II : Students can register this after completing Mathematics I.		
	Contemporary Japanese Language B	4		2	2	4			2	2	4			
	Classics B	4		4	4	8			3	3	6			
Geography and History	World History A	2	○	□2		0-2	Art : Students can choose one out of Music I, Art and Design I and Calligraphy I and they continue registering the same subject.		2		2	Art : Students can choose one out of Music I, Art and Design I and Calligraphy I and they continue registering the same subject.		
	World History B	4	○		◇3	◇3		0-6						
	Japanese History A	2	○	□2		0-2				▽2			0-2	
	Japanese History B	4	○		◇3	◇3		0-6						
	Geography A	2	○	□2		0-2								
Geography B	4	○		◇3	◇3	0-6								
Civics	Contemporary Society	2	⊙	2		2	the second year Geography and History : Students choose one subject out of □. Students continue registering the same subject in the third year.	2			2	the second year Geography and History : Students choose one subject out of ▽. Students continue registering Geography B in the third year.		
	Civics Research		●			3				▽3			0-3	
Mathematics	Mathematics I	3	⊙	3		3	If students choose World History A out of □, they must choose Japanese History B or Geography B out of ◇. If they choose Japanese History A or Geography A out of □, they must choose World History B out of ◇.	3			3	Mathematics : Students have to choose one subject out of ★ and they must continue registering the same subject in the third year.		
	Mathematics II	4		1	4	5		1	3		4			
	Mathematics III	5							☆1		4		0-5	
	Mathematics A	2		2		2		2					2	
	Mathematics B	2			2	2			2				2	
	Advanced Mathematics		●								Ω3			0-3
	Advanced Mathematics IA		●			▲2		0-2			Ω3			0-3
Advanced Mathematics IIB		●			★3	0-3			☆1	4	0-5			
Science	Basic Physics	2	○				Basic Earth Science : Students complete and get three modules over the first and the second semesters. Consolidated Basic Biology : Students complete and get three modules in the third semester. Regarding ★▲, students choose one subject out of ★ and one subject out of ▲. Or one subject out of ★▲.					Science : Students choose Advanced Physics or Advanced Biology and they continue registering the same subject in the third year. Advanced Chemistry must be completed after finishing Basic Chemistry.		
	Advanced Physics	4							2		3		0-5	
	Basic Chemistry	2	⊙	2		2		2					2	
	Advanced Chemistry	4							2		4		6	
	Basic Biology	2	⊙	2		2		2					2	
	Advanced Biology	4							2		3		0-5	
	Basic Earth Science	2	○		2	2								
	Consolidated Basic Physics		●											
	Consolidated Basic Chemistry		●			△2		0-2						
	Consolidated Basic Biology		●		1	2		3						
	Consolidated Basic Earth Science		●			△2		0-2						
Health and Physical Education	Physical Education	7~8	⊙	2	2	3	7	2	2	3	7			
	Health	2	⊙	1	1		2	1	1		2			
Art	Music I	2	○	2		0-2	School-designated Subjects : Subjects established in 2004 Music Research Art and Design Research Calligraphy Research Subjects established in 2012 Advanced Mathematics IA Advanced Mathematics IIB	2			0-2	School-designated Subjects : Subjects established in 2004 Advanced Mathematics Subjects established in 2012 Advanced Mathematics IA Advanced Mathematics IIB		
	Music II	2			1									
	Music III	2				△2		0-2						
	Art and Design I	2	○	2		0-2		2					0-2	
	Art and Design II	2			1									
	Art and Design III	2				△2		0-2						
	Calligraphy I	2	○	2		0-2		2					0-2	
	Calligraphy II	2			1									
	Calligraphy III	2				△2		0-2						
	Music Research		●			★▲5		0-5						
	Art and Design Research		●			★▲5		0-5						
Calligraphy Research		●			★▲5	0-5								
Foreign Languages	English Communication I	3	⊙	3		3	Consolidated Basic Physics Consolidated Basic Chemistry Consolidated Basic Biology Consolidated Basic Earth Science Advanced English	3			3	Subjects established in 2014 Civics Research		
	English Communication II	4			4	4			4		4			
	English Communication III	4				4		4			3		3	
	English Expression I	2		2		2		2					2	
	English Expression II	4			2	2		4		2	2		4	
Advanced English		●			★3	0-3								
Home Economics	Basic Home Economics	2	⊙	2		2	Subjects established in 2014 Civics Research	2			2			
Information	Information Study for Participating Community	2				▲2		0-2						
Home Economics	Information Study by Scientific Approach	2	⊙	2		2		2			2			
	Child and Culture	2~4				▲2	0-2							
	Life and Social Welfare	2~4				△2	0-2							
Special Activities	Food Design	2~6				★3	0-3							
	the Period for Integrated Studies	3~6	⊙	1	1	1	3	1	1	1	3			
	Homeroom Activities			1	1	1	3	1	1	1	3			
Total				32	32	32	96	32	32	32	96			
the number of modules to be acquired as graduation requirements				83					83					
Class time of one module									55 minutes					

Curriculum of Yamagata Prefectural Touhgakkan Senior High School for Students who Entered This School in the 2016 School Year

Full Time

General Course

Principal Hiroshi Kan

School Registration Number: 16

Subject Area and Subjects			Culture Course					Science Course					
Subject Area	Subjects	Standard Modules	The Number of Modules Taken in Each School Year				Notes	The Number of Modules Taken in Each School Year				Notes	
			1st.	2nd.	3rd.	Total		1st.	2nd.	3rd.	Total		
(required subject◎, optional required subject○, School-designated Subjects●)													
Japanese Language	Integrated Japanese Language	4	◎	4			4	4			4	the first year	
	Contemporary Japanese Language B	4			2	2	4		2	2	4	Mathematics II : Students can register this after completing Mathematics I.	
	Classics B	4			4	4	8		3	3	6		
	Japanese Language Research		●				0.2						
Geography and History	World History A	2	○		□2		0.2		2		2	Art : Students can choose one out of Music I, Art and Design I and Calligraphy I and they continue registering the same subject.	
	World History B	4	○		□2	◇2	★4	0.6					
	Japanese History A	2	○		□2		0.2			▽2	0.2		
	Japanese History B	4	○		□4	◇2	0.6						
	Geography A	2	○		□2		0.2						
	Geography B	4	○		□4	◇2	0.6		▽2	▽3	0.5		
	World History Research		●				0.2					the second year	
	Japanese History Research		●				0.2					Geography and History : Students choose one subject out of □.	
	Geography Research		●				0.2					Students choose one subject out of ◇ and continue registering the same subject in the third year.	
Civics	Contemporary Society	2	◎	2			2	2			2		
	Ethics	2					0.2						
	Politics and Economy	2					0.2						
	Civics Research		●				0.2						
Mathematics	Mathematics I	3	◎	3			3	3			3	If students choose World History B out of □, they must choose Japanese History B or Geography B out of ◇. If they choose Japanese History A or Geography A out of □, they must choose Japanese History B or Geography B or World History B out of ◇.	
	Mathematics II	4		1	4		5	1	3		4		
	Mathematics III	5							★1	▽4	0.5		
	Mathematics A	2		2			2	2			2	Mathematics : Students can choose one subject out of ★, they must continue registering it in the third year.	
	Mathematics B	2			2		2		2		2		
	Mathematics Research A		●						★1	▽4	0.5	Science : Students choose one subject either from Advanced Physics or from Advanced Biology. They must continue registering the same subject in the third year.	
	Mathematics Research B		●							■3	0.3		
	Mathematics Research Z		●							■3	0.3		
	Mathematics Research I		●				0.3						
	Mathematics Research II		●				0.2						
Science	Basic Physics	2	◎						★2		2	the third year	
	Advanced Physics	4							◆2	◆3	0.5		
	Basic Chemistry	2	◎	2			2	2			2	If students choose World History B (four modules) out of ★, they are given an option to choose Politics and Economy (two modules) and one subject out of ■ (two modules).	
	Advanced Chemistry	4											
	Basic Biology	2	◎	2			2	2			2	Science Students can choose one subject out of ▼.	
	Advanced Biology	4							◆2	◆3	0.5		
	Basic Earth Science	2	◎		2					★2			
	Basic Chemistry Research		●				0.2						
	Basic Biology Research		●				0.2						
	Basic Earth Science Research		●				0.2						
Health and Physical Education	Physical Education	7~8	◎	2	2		3	7			3	the third year	
	Health	2	◎	1	1		2	1	1		2	Mathematics	
Art	Music I	2	○	2			0.2	2			0.2	Students can choose one subject out of ▼.	
	Music II	2	○		1		0.1						
	Art and Design I	2	○	2			0.2	2			0.2	Students can choose one subject out of ■.	
	Art and Design II	2	○		1		0.1						
	Calligraphy I	2	○	2			0.2	2			0.2	Science Students can choose one subject out of ◆.	
	Calligraphy II	2	○		1		0.1						
	Music Guided Research A		●				0.3					School-designated Subjects : Civics Research	
	Art and Design Guided Research A		●				0.3						
	Calligraphy Guided Research A		●				0.3					Mathematics Research A	
	Music Guided Research B		●				0.2						
Art and Design Guided Research B		●				0.2					Mathematics Research B		
Calligraphy Guided Research B		●				0.2							
Foreign Languages	English Communication I	3	◎	3			3	3			3	Mathematics Research Z	
	English Communication II	4			4		4		4		4		
	English Communication III	4				4	4			3	3		
	English Expression I	2		2			2	2			2		
	English Expression II	4			2		2	4		2	2	4	
	English Research A		●				0.2						
	English Research B		●				0.2						
Home Economics	Basic Home Economics	2	◎	2			2	2			2		
	Information Study by Scientific Approach	2	◎	2			2	2			2		
Special Activities	the Period for Integrated Studies	3~6	◎	1	1	1	3	1	1	1	3		
	Homeroom Activities			1	1	1	3	1	1	1	3		
Total				32	32	32	96	32	32	32	96		
Class time of one module													55 minutes

6 – School Calendar for the 2016 School

		April					
		junior high school		common		senior high school	
1	Fri				delivering the letter of appointment • staff meeting PTA Executive Staff meeting		
2	Sat						
3	Sun						
4	Mon			staff meeting	section meeting /school year staff meeting/department (subject) staff meeting, etc.	Health Checkup for Staff (female)	
5	Tue			textbook delivery date/school year staff meeting	staff meeting, etc.	Health Checkup for Staff (male) SSH Project Executive Staff Meeting①	
6	Wed			school year staff meeting	Session Meeting for Staff (on the usage of the School Business Support System) Entrance Ceremoney Preparatory Meeting	Project Promotion Committee for Creating Future①	
7	Thu			(in the morning) entrance orientation	Session Meeting for Staff (ICT)	(in the morning) school building guided tour, orientation for the the 2nd and the 3rd year students	
8	Fri				delivering PTA executive staff election sheet (in the afternoon) Entrance Ceremony	(in the morning) Opening School Ceremony •Starting Semester Ceremony	
9	Sat						
10	Sun					III Zentou Marksheets Typed Sham Examination	
11	Mon	5		delivering textbook • Gakkan Orientation ①, Bicycle Safety Education		Assignment Test dress code class① I placement guidance (~15) Curriculum Designing Committee ①	6
12	Tue	6		Gakkanorientation ②, students meet to ask questions about studying at home (~14)	Student Council (welcoming freshmen), PR of club activities	Assignment Test	6
13	Wed	6			session meeting to cope with food allergies	Career Objectives Survey ① II Study Support Meeting to Analyze Sham Test Result	6
14	Thu	6			urine examination (1st. Time), confirmation of PTA executive staff, day for the staff to leave school earlier for health reasons	each section meeting of Student Council Committee	6
15	Fri	6			Body Measuring	All Clubs General Meeting	6
16	Sat						
17	Sun					I Study Support	

18	Mon	6		Assignment Test	staff meeting on making school year objectives	Health Checkup for Staff	6
19	Tue	6	○	staff meeting/ school lunch starts	School closes at seven	health checkup for staff II III deadline of students' school records, anemia test (in the afternoon)	6
20	Wed	6	○	electrocardiography (JHS 1)	Exsecutive Staff committee	electrocardiography (Sr. high school I in the afternoon)	6
21	Thu	6		placement seminar for the freshmen (1 stay, 2 days in Tendo)		II lecture on career education, X-ray of chest (Sr. high school I in the afternoon) Project Promotion Committee for Creating Future②	6
22	Fri	6				deadline of school record table SSH session meeting anemia test (in the afternoon)	6
23	Sat						
24	Sun						
25	Mon	6	○		staff meeting (5 minutes shorter classes)		6
26	Tue	6	○	staff meeting	MT		7
27	Wed	6	○		Urine examination (2nd Time)	I Study Support meeting to analyze school counselor's visiting day	6
28	Thu	6	○	pep for prefectural long-distance relay road race, Bicycle Safety Class AT	day for the staff to leave school earlier for health reasons	I lecture on career education, commission of volunteer coaches of club activities	7
29	Fri			survey for academic skill progression ①	[national holiday]		
30	Sat						
Total							
		total numbers of the month	total numbers	notes		total numbers	total
①		14	14	Monday planning committee (JHS)		14	14
②		83	83	III Guidance to students wishing to work after graduation		86	86
③		6	6				

- ① the number of school days
 ② the number of classes given
 ③ the number of days of giving school lunch

May							
			junior high school		common	senior high school	
1	Sun						
2	Mon	6	○		safety check PTA Executive Meeting①	pep rally①	6
3	Tue				[national holiday]		
4	Wed				[national holiday]		
5	Thu				[national holiday]	regional sports meet (Track and Field ~6)	
6	Fri	3	○			examination of student council's proxy statement, school trip planning committee ①	6
7	Sat						
8	Sun						
9	Mon	6	○	meeting for regional teachers lesson study (in the afternoon)	section meeting	III health checkup (Internal medicine) health checkup (male)	6
10	Tue	6	○	MT		III health checkup (Internal medicine) health checkup (female), curriculum designing committee ②	7
11	Wed	6	○			SSH Project Executive Staff Meeting ② II health checkup (Internal medicine) health checkup (male) school counselor's visiting day	6
12	Thu	6	○	staff meeting, (regional JHS long-distance relay road race) AT	Uring examination (3rd time) day for the staff to leave school earlier for health reasons	General meeting of student council	7
13	Fri	6	○			regional Sr. high school PTA General Assembly, II health checkup (Internal medicine) health checkup (female)	6
14	Sat					regional sports meet	
15	Sun					regional sports meet	
16	Mon	6	○		school safety committee①	department (subject) staff meeting	6
17	Tue	6	○	primary school and JHS information exchange meet MT		regional high school teachers' lesson studying meeting	2

18	We d	6	○	lesson study		the first semester mid-term tests ①	3
19	Thu	6	○	day for the staff to leave school earlier for health reasons, special committee AT	School closes at seven	the first semester mid-term tests ②	3
20	Fri	6	○		Exsecutive Staff committee	the first semester mid-term tests ③	3
21	Sat	4		home lunch	PTA General Assembly•all classes are open to PTA members		4
22	Sun						
23	Mo n	6	○		staff meeting(5 minutes shorter classes)	survey of studying time spent home①(～27) , student teachers ORT	6
24	Tue	6	○	regional JHS swimming match pep rally MT	evacuation drill①	student teachers(～6/14)	7
25	We d	6	○	regional JHS swimming match		Project Promotion Committee for Creating Future③ I health checkup (Internal medicine) health checkup (male) school counselor's visiting day	6
26	Thu	6	○	regional JHS swimming match, staff meeting AT	day for the staff to leave school earlier for health reasons		7
27	Fri	6	○	examination of proxy statement of student council		Prefectural Sr. High School Athletic Meet (Track and Field ～ 30) I health checkup (Internal medicine) health checkup (female)	6
28	Sat						
29	Sun						
30	Mo n	6	○	pretest I		SSH.P.T.	6
31	Tue	6	○	I health checkup (Internal medicine) health checkup (male/female)	section meeting	Prefectural Sr. High School PTA General Assembly	6
				total numbers of	total numbers	total numbers	tot al
①		20			Sr. high schoolII Zentou description typed sham examination	34	20
②		115			Sr. high schoolIII Zentou marksheet typed sham examination		10
③		19			Sr. high schoolIIISr. high school medical school sham examination health checkup (internal medicine) (eye sight) health checkup water safety test, staff session (preparedness education)	195	9

- ① the number of school days
② the number of classes given
③ the number of days of giving school lunch

June							
		junior high school		common		senior high school	
1	We d	6	○		safety check Meeting together with councilors・members of School officials Evaluation Committee ①, Committee of Coping with Bullying Problems	school counselor's visiting day	6
2	Thu	6	○	Students Council General Asembly Meeting AT	day for the staff to leave school earlier for the health reason	lecture on information safety education	7
3	Fri	6	○	Advisor' lecture from Tohoku University of Art and Design, BS		prefectural Sr. high school athletic meet, all students' volunteer day	0
4	Sat					prefectural Sr. high school athletic meet	
5	Sun					prefectural Sr. high school athletic meet	
6	Mo n				5/21 substitute holiday		
7	Tue	6	○	staff meeting MT			7
8	We d	6	○		(eye sight) health checkup	III after school seminar starts, department (subject) staff meeting	6
9	Thu	6	○	AT	dental health checkup (in the morning) day for the staff to leave school earlier for health reasons	I Guidance to lead cultural and science course Award Giving Ceremony ①	7
10	Fri	6	○		STEP EIKEN (listening and written test)(sub-test centre)	III Shinkenmarksheet typed sham examination Prefectural Sr. high school PTA Federation session meeting (Salhoku Regional Research Meet)	6
11	Sat					III Shinken Marksheet Typed Sham Examination	
12	Sun				STEP EIKEN (listening and written test)(main test centre)		
13	Mo n	6	○			SSH Project Exsecutive Staff Meeting ③	6
14	Tue	6	○			Lecture on Mental Health	7
15	We d	6	○		Exsecutive Staff committee	Acknowledgement of additional modules to Fulfill the Requirements for Graduation, day for the staff to leave school earlier for health reasons school counselor's visiting day	6
16	Thu	5	○	pep rally	day for the staff to leave school earlier for health reasons	I Bike Riding Safety Class	7
17	Fri	5	○			Tohoku Sr. high school Track and Field Athletic Meet (~20)	6

18	Sat	3	home lunch	regional sports meet		III Saturday seminar① (career lecture)	
19	Sun			regional sports meet		II Seminar Camp	
20	Mon			6/18 substitute holiday		(in the afternoon) classes are open to local JHS students ① classes are open to all staff for lesson study (~24)	6
21	Tue	6	○	MT		(in the afternoon) classes are open to local JHS students ②	7
22	Wed	6	○			Project Promotion Committee for Creating Future④	6
23	Thu	6	○	AT	otorhinology health checkup (in the morning) School closes at seven		7
24	Fri	6	○		staff meeting(5 minutes shorter classes)		6
25	Sat						
26	Sun						
27	Mon	6	○		section meeting		6
28	Tue	6	○	staff meeting	MT		7
29	Wed	6	○		(eye sight) health checkup	Curriculum Designing Committee ③	6
30	Thu	6	○	interviews between students and teachers (~4) day for the staff to leave school earlier for health reasons, monthly section meeting AT		The First Semester Test①	3
		total numbers of the month	total numbers	notes	total numbers	total numbers of the month	
①		21	55	Sr. high school III company recruitment guidance	55	21	
②		121	319	lesson study week (Sr. high school) doctor's advise sheet is to be distributed to each staff member	320	125	
③		20	45				

- ① the number of school days
 ② the number of classes given
 ③ the number of days of giving school lunch

July							
		junior high school	common	senior high school			
1	Fri	6	○		safety check, cardiopulmonary resuscitation session	the first semester semester test②	3
2	Sat						
3	Sun						
4	Mon	6	○			the first semester semester test③ III career strategy meeting for homeroom teachers①	3
5	Tue	5	○	the first semester semester test	In school Traffic Safety Committee, session meeting	the first semester final tests④	3
6	Wed	6	○			I Academic Tour II Visiting Companies, school counselor's visiting day	6
7	Thu	6	○	AT	day for the staff to leave school earlier for health reasons	pep rally② PTA Tohoku Distoric meeting (~ 8)	7
8	Fri	6	○			In school lesson study (session meeting) Certificate Test of Kanji, day for the staff to leave school earlier for health reasons ① Prefectural Match to Select Representatives to National Athletic Meet (Track and Field (~10)), department (subject) staff meeting Tokyo University Friday Seminar ④	
9	Sat					III Saturday seminar②	
10	Sun				STEP EIKEN (Interview)(main test centre)		
11	Mon	6	○			I lecture by University Researchers SSH Project Exsecutive Staff Meeting④	6
12	Tue	0	○		class match	Lesson Evaluation ①	0
13	Wed	0	○	(in the afternoon) all students' volunteer day deadline to submit school records		class match, SS Committee	0
14	Thu	6	○	day for the staff to leave school earlier for health reasons, monthly section committee AT	day for the staff to leave school earlier for health reasons	deadline of students' school records	7
15	Fri	6	○			III Shinken description typed Tokyo University Friday Seminar⑤ Project Promotion Committee for Creating Future③	6
16	Sat					I II III Shinken description typed	
17	Sun						

18	Mon				[national holiday]		
19	Tue	5	○	Submission deadline of school records. MT	School closes at seven		7
20	Wed	6	○		Exsecutive Staff committee	deadline of school record table school counselor's visiting day	6
21	Thu	4	○			closing semester ceremony, awarding ceremony ②	4
22	Fri	6	○	Prefectural Junior High School Sports Meet		summer seminar①	
23	Sat			Prefectural Junior High School Sports Meet		II Career Session for Guardians	
24	Sun			Prefectural Junior High School Sports Meet			
25	Mon	4	○	Prefectural Junior High School Sports Meet closing semester ceremony	staff meeting to acknowledge students school records	summer seminar②	
26	Tue			summer seminar/staff meeting for reflection		summer seminar③ committee of making certificate of school records staff meeting together with the 3rd year homeroom teachers and career office staff	
27	Wed			summer seminar/interview with students and their guardians	Session Meeting for staff (preparedness education)	summer seminar④	
28	Thu			summer seminar/interview with students and their guardians	day for the staff to leave school earlier for health reasons	summer seminar⑤ Session for Staff (visiting lecturer from Tohoku Univ. of Art and Design) All Japan Sr. High School Athletic Meet(~8/20)	
29	Fri			interview with students and their guardians		(in the morning) School Information Program Event	
30	Sat	0	home lunch	(in the morning) School Information Program Event		All Japan Sr. High School Culture Festival (~8/3)	
31	Sun						
		total numbers of	total numbers	notes		total numbers	total numbers of the month
①	17	72		Sr. high school III interview with students and their guardians		68	13
②	78	397		Sr. high school II with students' guardians recruitment seminar for public servants		378	58
③	16	61		Sr. high school I II guidance for the students wishing to be public servants ①			

- ① the number of school days
 ② the number of classes given
 ③ the number of days of giving school lunch

		August						
		junior high school			common		senior high school	
1	Mon						III summer seminar 2nd round	
2	Tue			deadline of school documentation, books of student records			III summer seminar 2nd round	
3	Wed				day for the staff to leave school earlier for health reasons		III summer seminar 2nd round	
4	Thu						III summer seminar 2nd round II Zentou description typed sham examination	
5	Fri			7/30 substitute holiday			III summer seminar 2nd round	
6	Sat				Vi		Visiting	
7	Sun							
8	Mon				Yamagata Arithmetic and Mathematics contest Executive Staff committee			
9	Tue							
10	Wed				day for the staff to leave school earlier for health reasons			
11	Thu				[national holiday]			
12	Fri							
13	Sat							
14	Sun							
15	Mon							
16	Tue							
17	Wed			staff meeting			staff meeting meeting for students wishing to work	

18	Thu	6	○	day for the staff to leave school earlier for health reasons, monthly section meeting AT	Beginning of the semester ceremony School closes at seven	dress code class ②	6
19	Fri	6	○	assignment test	staff meeting (5 minutes shorter classes)	I II assignment test III Zentou marksheet typed sham examination	6
20	Sat					III Zentou marksheet typed sham examination	
21	Sun						
22	Mon	4	○	Touoh Festival preparation		Touoh Festival preparation	6
23	Tue	4	○	Touoh Festival preparation			7
24	Wed	4	○	Touoh Festival preparation		staff meeting for students to enter upper school with a letter of recommendation Touoh Festival preparation	6
25	Thu	4	○	Touoh Festival preparation	day for the staff to leave school earlier for health reasons	Touoh Festival preparation	7
26	Fri	4	○	Touoh Festival preparation		Touoh Festival preparation	4
27	Sat	0		home lunch	Touoh Festival	The first regional Junior and Senior High School Sports Match (Track and Field ~28)	0
28	Sun	0		home lunch	Touoh Festival		0
29	Mon				8/27 substitute holiday		
30	Tue	6	○	MT	Distributing School Evaluation Questionnaire, day for the staff to leave school earlier for health reasons		7
31	Wed	6	○			SSH Project Exsecutive Staff Meeting⑤ school counselor's visiting day	6
		total numbers of the month	total numbers	notes	total numbers	total numbers of the month	
①		11	83	Sr. high school I Open Campus of Yamagata University		79	11
②		44	441	Sr. high school III studying camp test of formaldehyde, Lesson Study amongst various subject departments (Sr. high school)		433	55
③		9	70				

- ① the number of school days
 ② the number of classes given
 ③ the number of days of giving school lunch

September								
			junior high school		common	senior high school		
1	Thu	6	○	staff meeting	AT	safety check	department (subject) staff meeting	7
2	Fri	6	○				Session Meeting for Staff (AO & entrance exam with a letter of recommendation)	6
3	Sat						I career lecture for students' gurdians III Saturday Seminar ③	
4	Sun							
5	Mon	6	○			section meeting		6
6	Tue	6	○	JHS Regional English Speech Contest	MT			7
7	Wed	6	○			Exsecutive Staff Committee	school counselor's visiting day	6
8	Thu	0		Touoh Camp I (1 night, 2 days at Yuza Town)		day for the staff to leave school earlier for health reasons	Pep Rally ③	7
9	Fri	0					curriculum designing committee ④	6
10	Sat						Regional Sr. high school 2nd and 3rd year students' sports meet	
11	Sun						Regional Sr. high school 2nd and 3rd year students' sports meet	
12	Mon					8/28 substitute holiday		
13	Tue	6	○	MT				7
14	Wed	6	○				Election of Student Council Members and Awarding Ceremony, Project Promotion Committee for Creating Future⑥ school counselor's visiting day	6
15	Thu	6	○	staff meeting	AT	day for the staff to leave school earlier for health reasons	Guidance to Students Taking University Entrance Centre Test, Prefectural Sr. High School the 2nd and the 3rd Year Students' Sports Meet (Track and Field ~17) Yamagata Prefectural Sr. high school School Curriculum Research Session is to be held here.	7
16	Fri	6	○				entrance exam committee② III Shinkenmarksheet typed sham examination	6
17	Sat		home lunch	General Survey for Academic Achievement			I II Study Support ② III Shinkenmarksheet typed sham examination	

18	Sun						
19	Mon				[national holiday]		
20	Tue	6	○	MT	School closes at seven	each section of student council committee	6
21	Wed	6	○		staff meeting (5 minutes shorter classes) Mid-term reflectional meeting for staff		6
22	Thu				[national holiday]		
23	Fri	6	○			SSH Project Executive Staff Meeting⑥	6
24	Sat	0	○	Regional first and second year students' sports meet			
25	Sun			Regional first and second year students' sports meet			
26	Mon			9/24 substitute holiday			6
27	Tue	6	○	MT			7
28	Wed	6	○	(in the afternoon) classes are open to public, JHS entrance exam notice and explanations to the examinees and their families (Board of Prefectural Education)	day for the staff to leave school earlier for health reasons	the second semester mid-term test ①, III career strategy meeting for homeroom teachers②	3
29	Thu	6	○	day for the staff to leave school earlier for health reasons, monthly section committee AT		the second semester mid-term test ②	3
30	Fri	6	○			the second semester mid-term test ③ student council leaders' session meeting, distributing a sheet of survey of students' time spent for studying at home ②	3
total numbers of the month							
		total numbers of the month	total numbers	notes	total numbers	total numbers of the month	
①		19	102	Sr. high school I II career objectives survey②	98		19
②		96	537	Sr. high school III Sr. high school medical school sham examination	544		111
③		17	87				

- ① the number of school days
 ② the number of classes given
 ③ the number of days of giving school lunch

		October					
		junior high school		common		senior high school	
1	Sat			JHS Entrance Exam Application Procedure Explanation Day		Tohoku District Sr. High School the 2nd and the 3rd year Students' Sports Meet (Track and Field) (~3)	
2	Sun			JHS Entrance Exam Procedure Explanation Day			
3	Mon	5	○	Mid-term Test	safety check	department (subject) staff meeting SSH Advisors' Meeting ①	6
4	Tue	6	○	JHS entrance exam procedure explanation day MT		Drama Class (in the morning)	7
5	Wed	6	○		section meeting	school counselor's visiting day	6
6	Thu	6	○	staff meeting	AT	day for the staff to leave school earlier for health reasons	7
7	Fri	6	○			STEP EIKEN (listening and written test) (sub-test centre) III career objectives survey ② III Shinken description typed sham examination	6
8	Sat			Academic Achievement Changes Survey ②		Prefectural Sr. High School 2nd and 3rd Year Students' Sports Meet (games played outside school building) III Shinken description typed sham examination	
9	Sun					Prefectural Sr. high school 2nd and third year students' sports meet (games played outside school building)	
10	Mon				[national holiday]		
11	Tue	6	○	MT		School Safety Committee② deadline of students' school records	7
12	Wed	6	○			Exsecutive Staff Committee examination of proxy statement of student council	6
13	Thu	6	○	AT	evacuation drill② day for the staff to leave school earlier for health reasons	I Study Support meeting to analyze②	7
14	Fri	6	○			deadline of school record table Prefectural Sr. High School Cultural Festival, Prefectural Sr. High School Japanese Language Lesson Study Teachers' meeting	6
15	Sat			Prefectural junior high school first and second year students' north block sports meet (~16)		Prefectural Sr. High School Cultural Festival III Saturday seminar④	
16	Sun					Prefectural Sr. High School Cultural Festival II seminar camp	
17	Mon	5	○	receiving questions from applicants and their guardians (~29) Sports Festival preparation ↓		SSH Project Exsecutive Staff Meeting⑦	6

18	Tue	5	○	Sports Festival preparation		II Study Support meeting to analyze	7
19	Wed	5	○	Sports Festival preparation	staff meeting (5 minutes shorter classes)	The Latter Half School Year General Meeting of Student Council·Awarding Ceremony ④ dress code class③	4
20	Thu	5	○	Sports Festival preparation	School closes at seven	I Lecture (Career education) ② II Lecture (Career education)②	7
21	Fri	5	○	Sports Festival preparation		Project Promotion Committee for Creating Future⑦ II Shinken description typed sham examination	6
22	Sat					I II Shinken Description Typed Sham Examination III Zentou Description Typed Sham Examination II Career Session Meeting for Guardians	
23	Sun	0	home lunch	Sports Festival (open to public)			
24	Mon			10/23 substitute holiday		curriculum designing committee⑤	6
25	Tue	6	○	staff meeting	MT		7
26	Wed	6	○			school counselor's visiting day	6
27	Thu	6	○	day for the staff to leave school earlier for health reasons, monthly section meeting AT	day for the staff to leave school earlier for health reasons		7
28	Fri	6	○			Prefectural Sr. High School Long-Distance Relay Road Race (~29)	6
29	Sat						
30	Sun						
31	Mon	6	○			department (subject) staff meetings	6
		total numbers of the month	total numbers	notes		total numbers	total numbers of
①		20	122	marathon festival		118	20
②		108	645	test for degree of light		670	126
③		19	106	additional health check up for staff			

- ① the number of school days
 ② the number of classes given
 ③ the number of days of giving school lunch

November							
			junior high school	common	senior high school		
1	Tue	6	○	MT	safety check day for the staff to leave school earlier for health reasons	lesson study which is open to public Keynote Education Lecture	4
2	We d	6	○		section meeting		6
3	Thu				[national holiday]	III career lecture	
4	Fri	6	○		Exsecutive Staff committee	III Shinken marksheet typed sham examination	6
5	Sat					Prefectural Sr. high school 2nd and 3rd year students' sports meet(games played inside school building) III Shinken marksheet typed sham examination	
6	Sun				STEP EIKEN (Interview) (main test centre)	Prefectural Sr. high school 2nd and 3rd year students' sports meet (games played inside school building)	
7	Mo n	6	○			II School Trip①	6
8	Tue	3	○	(in the afternoon) meeting for regional teachers lesson study A		II School Trip②	7
9	We d	6	○			II School Trip③	6
10	Thu	3	○	AT	day for the staff to leave school earlier for health reasons	II School Trip④	7
11	Fri			Regional JHS Cultural Festival	11/19 substitute holiday	III Tohoku University Sham Test	
12	Sat					III Tohoku University Sham Test III Saturday seminar⑤	
13	Sun						
14	Mo n	6	○			SSH Project Exsecutive Staff Meeting⑥	6
15	Tue	6	○	MT			7
16	We d	6	○	Lesson Study (Teachers' Consultants visit as Advisors)		curriculum designing committee⑦ school counselor's visiting day	6
17	Thu	6	○	day for the staff to leave school earlier for health reasons, monthly section meeting AT	School closes at seven		7

18	Fri	6	○			Project Promotion Committee for Creating Future③	6
19	Sat				School Starting Memorial Ceremony		
20	Sun						
21	Mon	6	○		staff meeting (5 minutes shorter classes)		6
22	Tue	6	○	MT			7
23	Wed				[national holiday]		
24	Thu	6	○	staff meeting	AT	day for the staff to leave school earlier for health reasons	7
25	Fri	6	○			entrance exam committee③	6
26	Sat					I II Saturday seminar①	
27	Sun						
28	Mon	6	○	Application Acceptance starts(~12/2)			6
29	Tue	6	○	interview between student and teacher (~2)	MT		7
30	Wed	6	○			school counselor's visiting day	6

	total numbers of the month	total numbers	notes	total numbers	total numbers of the month
①	19	141	Sr. high school I Drug Abuse Prevention Class High school I Top Seminar & Enterprise Man's Lecture	137	19
②	108	753		789	119
③	19	125			

- ① the number of school days
- ② the number of classes given
- ③ the number of days of giving school lunch

December							
			junior high school	common	senior high school		
1	Thu	6	○	AT	safety check, day for the staff to leave school earlier for health reasons	the second semester final tests①	3
2	Fri	6	○		section meeting	the second semester final tests②	3
3	Sat						
4	Sun						
5	Mon	5	○	the second semester final tests		the second semester final tests③ III career strategy meeting for homeroom teachers③	3
6	Tue	6	○			the second semester final tests④ III career strategy meeting for homeroom teachers③	3
7	Wed	6	○			department (subject) staff meeting school councilor's visiting day	6
8	Thu	6	○	AT	day for the staff to leave school earlier for health reasons		7
9	Fri	6	○		Executive Staff committee	III Zentou Pre- Centre Sham Test, deadline of students' school records	6
10	Sat			GTEC		I II Saturday seminar② III Zentou Centre Pre Sham Test English Camp	
11	Sun					English Camp	
12	Mon	6	○	submission deadline of school records		SSH Project Executive Staff Meeting⑨ In school Reciprocal Lesson Study Week (~16) deadline of school record table	6
13	Tue	6	○	MT			7
14	Wed	6	○		staff meeting (5 minutes shorter classes)		6
15	Thu	6	○	day for the staff to leave school earlier for health reasons, monthly section meeting AT	day for the staff to leave school earlier for health reasons		7
16	Fri	6	○	Submission deadline for school records		Project Promotion Committee for Creating Future⑨	6
17	Sat					I II Saturday seminar③	

18	Sun						
19	Mon	5	○				6
20	Tue	5	○	MT	School closes at seven		7
21	Wed	5	○			(in the afternoon) closing semester ceremony Awarding Ceremony ⑤	4
22	Thu	4	○	(in the afternoon) closing semester ceremony gurdians meeting		winter seminar① I Strategic Meeting for Homeroom Teachers to Give Career Education①	
23	Fri				[national holiday]	III University Entrance Centre Test drill II studying camp(~25)	
24	Sat					III University Entrance Centre Test drill	
25	Sun						
26	Mon			winterseminar		winter seminar ②	
27	Tue			winter seminar, deadline of school documentation, books of student records Reflection staff meeting		winter seminar ③	
28	Wed				1/8 substitute holiday		
29	Thu						
30	Fri						
31	Sat						
		total numbers of the month	total numbers	notes		total numbers	total numbers of the month
①		16	157	Sr. high school I II Guidance for public servants ②		152	15
②		90	843	Hygine Committee CO2 test		869	80
③		16	141				

- ① the number of school days
 ② the number of classes given
 ③ the number of days of giving school lunch

		January					
		junior high school		common		senior high school	
1	Sun					[national holiday]	
2	Mon						
3	Tue						
4	Wed					1/7 substitute holiday	III University Entrance Centre Test drill
5	Thu			staff meeting			III University Entrance Centre Test drill 3rd year Home Room teachers' staff meeting on Career Education SSH Project Exsecutive Staff Meeting⑩
6	Fri	5	○			starting semester ceremony• assignment test safety check entrance exam Preparation	dress code class④ 5
7	Sat					JHS Entrance Exam	
8	Sun					entrance exam related business	
9	Mon					[national holiday]	
10	Tue	6	○				Guidance for University Centre Test 7
11	Wed	6	○				Entrance Exam Committee④ school counselor's visiting day 6
12	Thu	6	○	AT		Karuta Card Game Festival Entrance Exam Related Business: deadline to send the result of entrance exam. Day for staff to leave school earlier for health reasons.	department (subject) staff meeting 6
13	Fri	6	○			section meeting	III Pep up Meet for University Centre Examination II Shinkendescription typed sham examination 6
14	Sat		home lunch	Survey for Changes in Academic Achievement ③			University Centre Exam I II Shinken description typed sham examination
15	Sun						University Centre Exam
16	Mon	6	○				III Day to sum up points of University Centre Examination. Project Promotion Committee for Creating Future⑩ 6
17	Tue	6	○	JHS Reagional English Recitation Contest MT			III seminar for private univ. and National Univ. starts 7

18	Wed	6	○		Executive Staff committee	school counselor's visiting day	6
19	Thu	6	○	AT	School closes at seven	III Acknowledgement of additional modules to Fulfill the Requirements for Graduation	7
20	Fri	6	○		STEP EIKEN (listening and written test) (sub-test centre)	III Investigative Commission for National Univ.	6
21	Sat					III Investigative Commission for National Univ. I II Saturday seminar④	
22	Sun				STEP EIKEN (listening and written test) (main test centre)		
23	Mon	6	○				6
24	Tue	6	○	staff meeting	MT		7
25	Wed	6	○		staff meeting (5 minutes shorter classes)		6
26	Thu	6	○	day for the staff to leave school earlier for health reasons, monthly section meeting	AT	day for the staff to leave school earlier for the health reason	7
27	Fri	6	○			III deadline of students' school records	6
28	Sat			Entrance Orientation① (in the morning)		II career session meeting for guardians (in the afternoon)	
29	Sun						
30	Mon	6	○			In-school session meeting (Lesson Study)	6
31	Tue	6	○		MT	III deadline of school record table	7
		total numbers of the month	total numbers	notes		total numbers	total numbers of the month
①		17	174			169	17
②		101	944			976	107
③		17	158				

- ① the number of school days
 ② the number of classes given
 ③ the number of days of giving school lunch

February							
			junior high school		common	senior high school	
1	We d	6	○		safety check	department (subject) staff meeting	6
2	Thu	6	○	AT	day for the staff to leave school earlier for health reasons		7
3	Fri	6	○		section meeting	Staff meeting on acknowledging students modules whether or not they fulfill the requirements to graduate. day for the staff to leave school earlier for health reasons	6
4	Sat					I II Saturday seminar⑤ II Zentou Sr. high school2 description typed sham examination	
5	Sun						
6	Mo n	6	○		PTA Exsecutive Meeting② Committee of School Healthcare	survey of time spent for studying at home ③ (~12)	6
7	Tue	6	○	MT			7
8	We d	6	○		Reflection staff meeting of this school year		6
9	Thu	6	○	staff meeting	AT	day for the staff to leave school earlier for the health reason	7
10	Fri	6	○			Chinese character certificate test day for the staff to leave school earlier for health reasons ② SSH Project Exsecutive Staff Meeting④	6
11	Sat				[national holiday]	I II Saturday seminar⑥ (II Zentou sham examination reflection lecture)	
12	Sun						
13	Mo n	6	○			Project Promotion Committee for Creating Future④	6
14	Tue	6	○	MT			7
15	We d	6	○		Exsecutive Staff Committee	school counselor's visiting day	6
16	Thu	6	○	AT			7
17	Fri	6	○			II Shinken marksheet typed sham examination	6

18	Sat	6	home lunch		Presentation of Future Creation School closes at seven	entrance exam committee⑤	6
19	Sun				STEP EIKEN (Interview) (main test centre)	II Shinken Marksheet Typed Sham Examination	
20	Mon				2/18 substitute holiday		
21	Tue	6	○	MT			7
22	Wed	6	○		staff meeting (5 minutes shorter classes)		6
23	Thu	6	○	staff meeting AT	day for the staff to leave school earlier for health reasons		7
24	Fri	6	○	interview between student and teacher(~2)			6
25	Sat					Entrance Exam of National University (I)	
26	Sun						
27	Mon	6	○			dress code class⑤	6
28	Tue	6	○			Alumini Socoety Acceptance Ceremony , Cleaning Day Graduation Ceremony Drill Awarding Ceremony	6
		total numbers of the month	total numbers	notes	total numbers	total numbers of the month	
①		20	194	Sr. high school II Shinken marksheet typed sham examination	189	20	
②		120	1064		1103	127	
③		19	177				

- ① the number of school days
 ② the number of classes given
 ③ the number of days of giving school lunch

March							
			junior high school	common	senior high school		
1	Wed			[Day to Study Home]		Graduation Ceremony	0
2	Thu	6	○	Final School Year Test AT	safety check day for the staff to leave school earlier for health reasons		7
3	Fri	6	○		Meeting together with councilors members of School officials Evaluation Committee ②	Entrance Exam Committee⑥	6
4	Sat						
5	Sun						
6	Mon	6	○			Final School Year Test ① department (subject) staff meeting II Strategic Meeting for Homeroom Teachers to give Career Education②	3
7	Tue	6	○	MT	section meeting	Final School Year Test ② I Strategic Meeting for Homeroom Teachers to give Career Education②	3
8	Wed	6	○		Exececutive Staff committee	Final School Year Test③	3
9	Thu	3	○	test records submission deadline, day for the staff to leave school earlier for the health reason, monthly section meeting AT	day for the staff to leave school earlier for health reasons	Final School Year Test ④ Entrance Exam Preparation	3
10	Fri			[Day to Study Home]		Sr. High School Entrance Exam	
11	Sat						
12	Sun					National Univ. Entrance Examination (II)	
13	Mon	6	home lunch	Outside School Learning Day		entrance exam related business Students of our school will not be permitted to come to school on this day.	
14	Tue	6	home lunch	Outside School Learning Day		entrance exam related business Students of our school will not be permitted to come to school on this day.	
15	Wed	6	○		School closes at seven	II Tsukuba Science Tour	6
16	Thu	6	○	Submission of Students' School Records AT	I II deadline of students' school records	↓	6
17	Fri			[day of learning at home]		Announcement of students passing the entrance examination, Students of our school will not be permitted to come to school on this day.	

18	Sat					I for the second year students · II for the third year students Study Support ①	
19	Sun					II spring seminar (outside school lecturer)	
20	Mon				[national holiday]	II spring seminar (outside school lecturer)	
21	Tue	3	home lunch			SSH Project Exsecutive Staff Meeting② deadline of school record table	3
22	Wed	3	home lunch				3
23	Thu	3	home lunch		I II module authorized meeting, staff meeting, section meeting, day for the staff to leave school earlier for health reason	(in the morning) Freshmen Orientation department (subject) staff meeting	3
24	Fri	3	home lunch	(in the afternoon) distribution of school records	End of the School Year Ceremony, Farewell Ceremony		3
25	Sat			(in the morning) Entrance Orientation②			
26	Sun						
27	Mon						
28	Tue			Reflection Staff Meeting			
29	Wed						
30	Thu				deadline of school documentation, books of student records day for the staff to leave school earlier for health reasons		
31	Fri						
		total numbers of the month	total numbers	notes		total numbers	total numbers of the month
①		14	208			202	13
②		69	1133			1152	49
③		8	185				

- ① the number of school days
 ② the number of classes given
 ③ the number of days of giving school lunch

7 – A Daily Timetable and Homeroom Class Organisation

○Yamagata Prefectural Touhoggakkan Junior High School Daily Timetable

Monday/ Wednesday/ Friday

Arrival of Students	8 : 20
Morning Meeting	8 : 25 ~ 8 : 30
1st period	8 : 35 ~ 9 : 30
2nd period	9 : 40 ~ 10 : 35
3rd period	10 : 45 ~ 11 : 40
Lunch Break	11 : 40 ~ 12 : 30
4th period	12 : 30 ~ 13 : 25
5th period	13 : 35 ~ 14 : 30
Cleaning Time	14 : 30 ~ 14 : 50
6th period	14 : 50 ~ 15 : 45
Closing Meeting	15 : 50 ~ 16 : 05

5 minutes shorter version

Monday/ Wednesday/ Friday

Arrival of Students	8 : 20
Morning Meeting	8 : 25 ~ 8 : 30
1st period	8 : 35 ~ 9 : 25
2nd period	9 : 35 ~ 10 : 25
3rd period	10 : 35 ~ 11 : 25
4th period	11 : 35 ~ 12 : 25
Lunch Break	12 : 25 ~ 13 : 15
5th period	13 : 15 ~ 14 : 05
6th period	14 : 15 ~ 15 : 05
Simple Cleaning	15 : 05 ~ 15 : 20
Closing Meeting	15 : 25 ~ 15 : 40

Tuesday/ Thursday

Arrival of Students	8 : 20
Morning Meeting	8 : 25 ~ 8 : 30
1st period	8 : 35 ~ 9 : 30
2nd period	9 : 40 ~ 10 : 35
3rd period	10 : 45 ~ 11 : 40
Lunch Break	11 : 40 ~ 12 : 30
4th period	12 : 30 ~ 13 : 25
5th period	13 : 35 ~ 14 : 30
Cleaning Time	14 : 30 ~ 14 : 45
6th period	14 : 45 ~ 15 : 40
Closing Meeting	15 : 45 ~ 16 : 00
MT / AT	16:05~16:35/16:05~17:00

○Yamagata Prefectural Touhokkan Senior High School Daily Timetable

Monday/ Wednesday/ Friday	
Arrival of Students	8 : 20
SHR	8 : 25 ~ 8 : 30
1st period	8 : 35 ~ 9 : 30
2nd period	9 : 40 ~ 10 : 35
3rd period	10 : 45 ~ 11 : 40
Lunch Break	11 : 40 ~ 12 : 30
4th period	12 : 30 ~ 13 : 25
5th period	13 : 35 ~ 14 : 30
Cleaning Time	14 : 30 ~ 14 : 50
6th period	14 : 50 ~ 15 : 45

5 minutes shorter version	
Monday/ Wednesday/ Friday	
Arrival of Students	8 : 20
SHR	8 : 25 ~ 8 : 30
1st period	8 : 35 ~ 9 : 25
2nd period	9 : 35 ~ 10 : 25
3rd period	10 : 35 ~ 11 : 25
4th period	11 : 35 ~ 12 : 25
Lunch Break	12 : 25 ~ 13 : 15
5th period	13 : 15 ~ 14 : 05
6th period	14 : 15 ~ 15 : 05
Simple Cleaning	15 : 05 ~ 15 : 20

Tuesday/ Thursday	
Arrival of Students	8 : 20
SHR	8 : 25 ~ 8 : 30
1st period	8 : 35 ~ 9 : 30
2nd period	9 : 40 ~ 10 : 35
3rd period	10 : 45 ~ 11 : 40
Lunch Break	11 : 40 ~ 12 : 30
4th period	12 : 30 ~ 13 : 25
5th period	13 : 35 ~ 14 : 30
Cleaning Time	14 : 30 ~ 14 : 45
6th period	14 : 45 ~ 15 : 40
7th period	15 : 50 ~ 16 : 45

○Homeroom Class Organisation in 2016

Junior High School

1st year

	Class A	Class B	Class C	Total
Male	16	16	16	48
Female	17	17	17	51
Total Number Enrolled	33	33	33	99

Senior High School

1st year

	Class 1	Class 2	Class 3	Class 4	Class 5	Class 6	Total
Male	15	16	15	16	15	16	93
Female	18	18	18	18	18	17	107
Total Number Enrolled	33	34	33	34	33	33	200

2nd year

	Class 1	Class 2	Class 3	Class 4	Class 5	Total
Male	16	15	15	12	12	70
Female	22	22	23	31	32	130
Total Number Enrolled	38	37	38	43	44	200

3rd year

	Class 1	Class 2	Class 3	Class 4	Class 5	Total
Male	15	14	12	13	13	67
Female	22	22	20	19	19	102
Total Number Enrolled	37	36	32	32	32	169

Junior High School

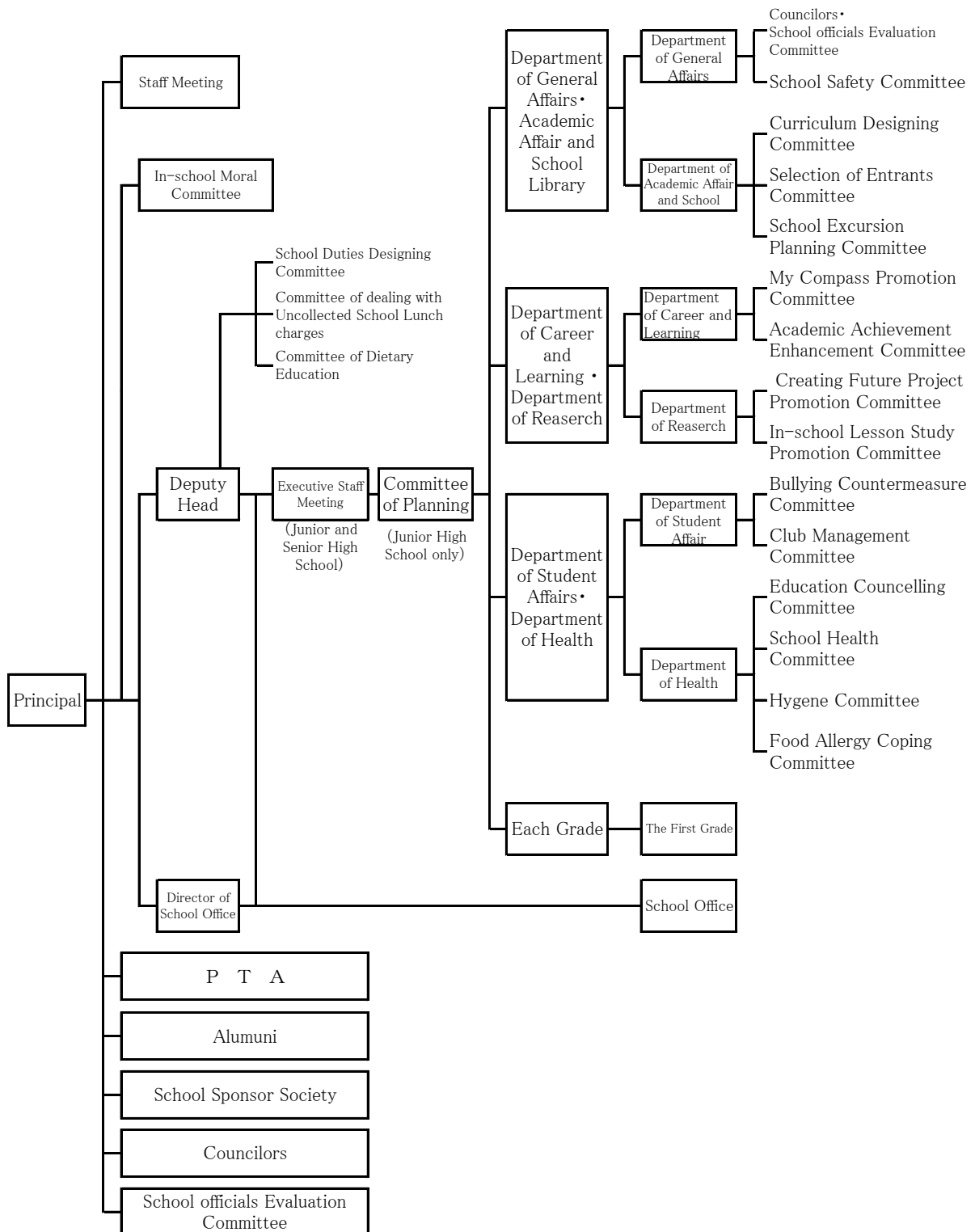
	1st year	
Male	48	48.5%
Female	51	51.5%
Total Number Enrolled	99	100.0%

Senior High School

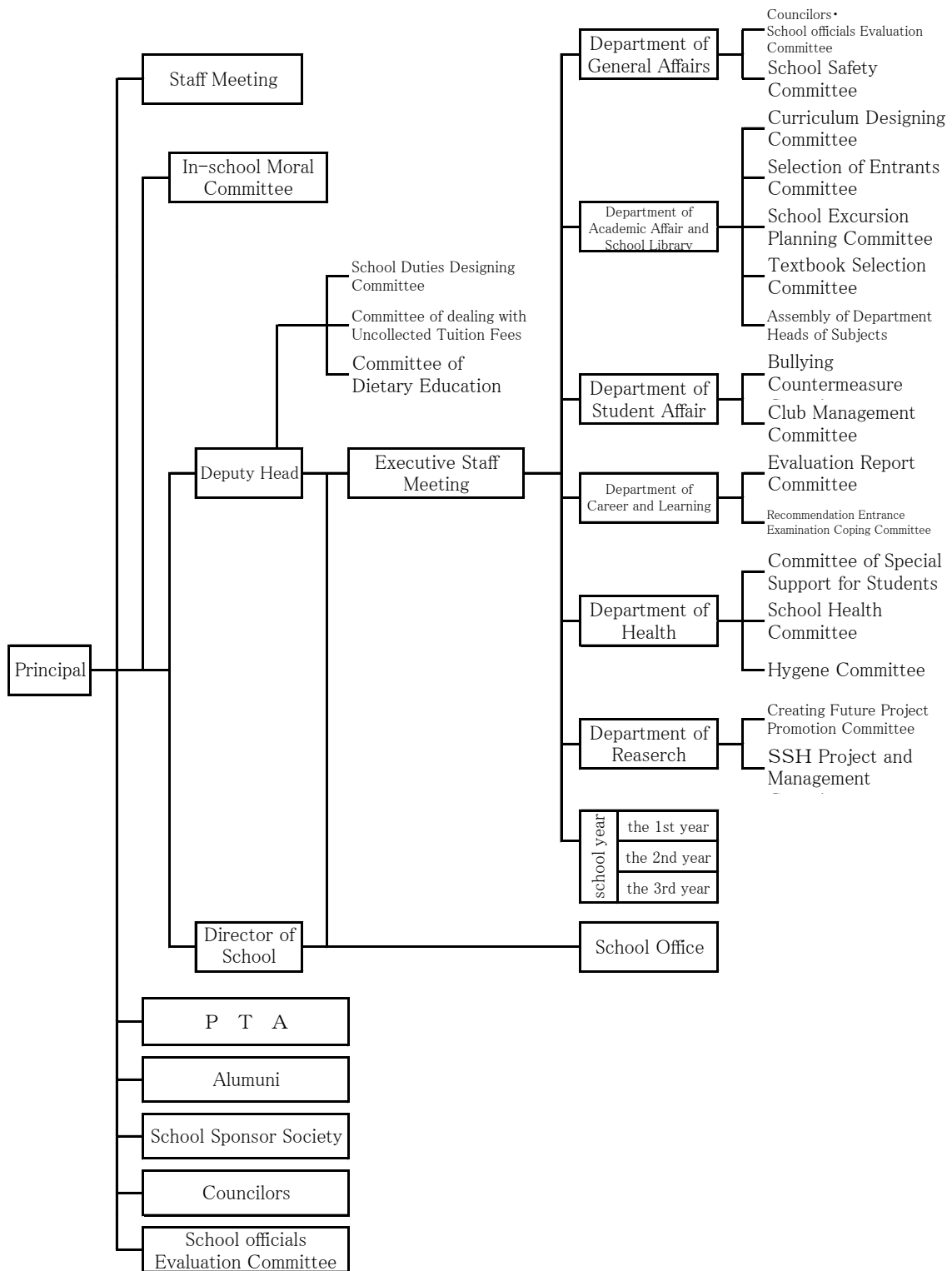
	1st year	2nd year	3rd year	Total	
Male	93	70	67	230	40.4%
Female	107	130	102	339	59.6%
Total Number Enrolled	200	200	169	569	100.0%

8 – School Administrative Organisation

<Junior high school>



<Senior high school>



9 – Students’ Status Quo

(1) The number of students who passed university entrance examination in 2016 (N.B. the information was summarized on 28th. of March in 2016 , the data which was the one of Tateoka Senior High School ,which is the forerunner of Touhgakkan High School)

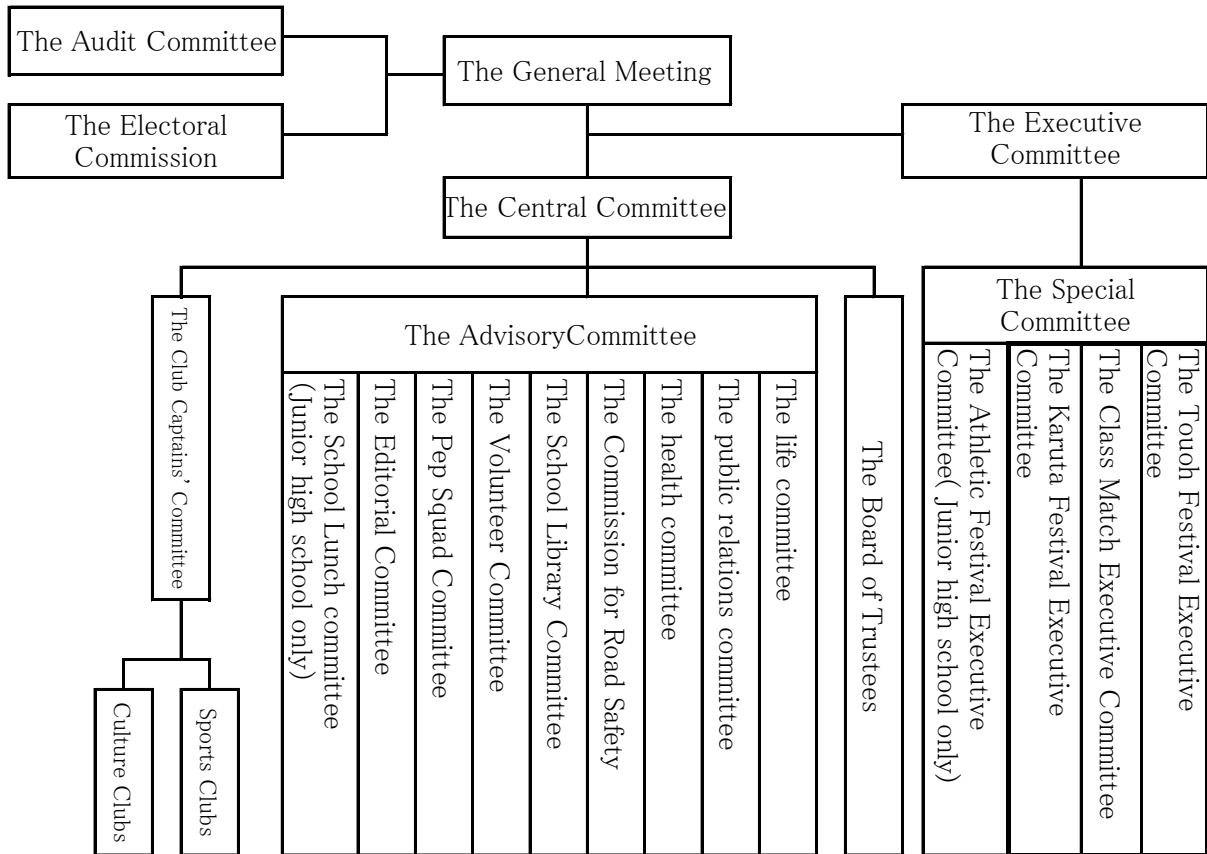
Categorization		Schools or Jobs Passed and Admitted (actual number)									School or Jobs Passed (cumulative total number)								
		Graduated in March, 2016			Comparison of the Numbers in the Past						Graduated in March, 2016			Comparison of the Numbers in the Past					
		Male	Female	2016	2015	2014	2013	2012	2011	Male	Female	2016	2015	2014	2013	2012	2011		
The Upper School	National University	25	9	34	19	26	22	17	25	25	9	34	20	26	22	18	26		
	Public University	11	7	18	7	9	13	13	9	15	9	24	7	9	13	13	10		
	Private University	32	48	80	87	73	67	89	80	70	68	138	172	152	167	185	191		
	National/ Public Junior College	2	8	10	9	5	10	5	9	2	9	11	9	5	11	9	14		
	Private Junior College	0	4	4	8	12	12	8	8	1	7	8	12	12	14	12	14		
	Nurse/ Medical Polytechnique	4	15	19	24	16	32	25	23	11	34	45	33	16	55	38	33		
	Other Politechnique except Medicine	7	4	11	8	13	18	13	21	5	6	11	8	13	20	14	24		
	Vocational Training School	2	0	2	4	7	8	1	5	5	0	5	4	8	8	1	5		
	Total	83	95	178	166	161	182	171	180	134	141	276	265	242	310	290	317		
Recruited	Public Servant	4	1	5	1	6	1	5	2	6	1	7	1	6	1	8	3		
	Company Employees	1	7	8	8	1	3	8	7	1	7	8	8	1	3	8	7		
	Total	5	8	13	9	7	4	13	9	7	8	15	9	7	4	16	10		
Others	Studying Abroad/ University of Self-Defence Forces	0	0	0	0	1	0	1	0										
	Other than the Students Mentioned above, Others Such as Ones between schools	1	1	2	5	7	9	6	4										
Total (the number of students who graduated from Tateoka)		89	104	193	180	175	195	191	193										

Changes in the number of students who passed university entrance examination in years (the numbers indicate total values)

Graduation Year	H27	H26	H25	H24	H23	H22	H21	H20	H19	H18	H17	H16	H15	H14	H13	H12
National University	58	27	35	35	30	36	43	43	34	31	40	41	36	39	23	23
Private University	138	172	152	167	185	191	164	172	222	176	179	157	131	122	121	98
Total	196	199	187	202	216	227	207	215	256	207	219	198	167	161	144	121
Total Number Who Passed the Exam for National Univ.	59(1)	29(2)	36(1)	36(1)	33(3)	43(7)	45(2)	47(4)	37(3)	35(4)	40	41	36	39	23	23

10 – Students' Council

(1) Organization of Student Council



(2) The number of students on each club in 2016

Junior High School

No.	Clubs	Sex	1st Year	Total
1	Track and Field	Male	1	4
		Female	3	
2	Basketball	Male	7	8
		Female	1	
3	Volleyball	Female	9	9
4	Soccer	Male	6	6
5	Tennis	Male	14	19
		Female	5	
6	Table Tennis	Male	0	1
		Female	1	
7	Japanese Archery	Male	6	10
		Female	4	
8	Brass Band	Male	3	17
		Female	14	
9	Art and Craft	Male	0	9
		Female	9	
10	Calligraphy	Male	4	6
		Female	2	
11	Natural Science	Male	7	10
		Female	3	
Total		Male	48	99
		Female	51	

Senior High School

Names of Teams & Clubs		1st yr.	2nd yr.	3rd yr.	Total	
Girls' Softball	Male		4	5	3	12
	Female	4				12
Track and Field	Male	10	18	5	12	22
	Female	8		7	4	19
Girls' Basketball	Male	10	10	2	3	15
	Female	0		0	0	0
Boys' Basketball	Male		2		3	7
	Female	2		3	2	7
Japanese Archery	Male	9	12	8	17	23
	Female	3		9	9	21
Girls' Volleyball	Male		4		11	21
	Female	4		11	6	21
Table Tennis	Male	5	11	1	9	11
	Female	6		8	1	15
Judo	Male		0		1	1
	Female				0	0
Soft Tennis	Male	0	0	0	4	8
	Female	0		4	2	6
Tennis	Male	13	22		0	13
	Female	9				9
Badminton	Male	6	14	16	5	27
	Female	8		9	7	24
Baseball	Male	7	9	9	6	22
	Female	2		0	3	5
Kendo	Male	0	0	1	3	4
	Female	0		2	1	3
Boys' Soccer	Male	12	14	18	12	42
	Female	2		2	0	4
Mountaineering	Male	9	12	2	5	16
	Female	3		3	1	7
(Swimming)	Male		3			0
	Female	3		2		5
Total	Male	81	135	62	127	204
	Female	54		65	39	158
Art and Craft	Male	1	9	1	6	3
	Female	8		5	9	22
Calligraphy	Male	0	6	0	18	0
	Female	6		18	10	34
Brass Band	Male		12	3	19	3
	Female	12		16	13	41
Drama	Male	0	7	0	4	0
	Female	7		4	7	18
Broadcasting	Male	0	2	4	4	4
	Female	2		0	7	9
Photo	Male	2	2	0	2	5
	Female	0		2	2	4
Tea Ceremony	Male	1	16	2	9	3
	Female	15		7	6	28
Natural Science	Male	6	6	2		8
	Female				1	1
(Karuta)	Male		3			0
	Female	3			5	8
Subtotal	Male	10	63	12	64	26
	Female	53		52	60	165
Total	Male	91	198	74	191	230
	Female	107		117	99	323